

# CINQ RÉGLES TYPOGRAPHIQUES APPELÉES AUSSI TYPOMÈTRES.

CUEILLIES FRAÎCHEMENT PAR GEOFFREY DORNE  
POUR LE BLOG [HTTP://GRAPHISM.FR](http://graphism.fr)

# APPELÉES AUSSI TYPOMÈTRES.

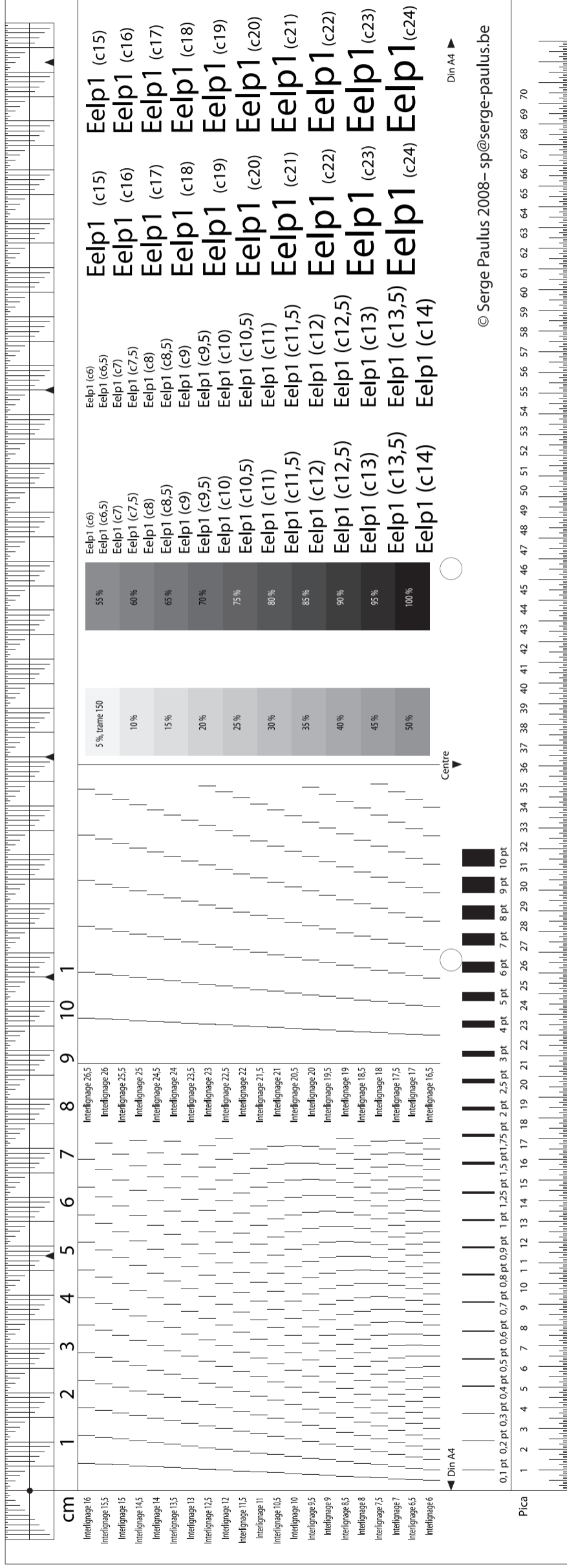
À IMPRIMER SUR UN FORMAT A3 SI VOUS  
SOUHAITEZ QUE LES TYPOMÈTRES SOIENT  
À LA BONNE TAILLE.

LE TYPOMÈTRE EST UNE RÈGLE GRADUÉE SUR UN CÔTÉ EN MILLIMÈTRES ET, DE L'AUTRE CÔTÉ, EN POINTS TYPOGRAPHIQUES. LE TYPOMÈTRE EST UTILISÉ DANS TOUS LES MÉTIERS DE L'IMPRIMERIE. LES TYPOMÈTRES PLUS PERFECTIONNÉS PEUVENT ÉGALEMENT MESURER L'INTERLIGNAGE, L'ÉPAISSEUR DES FILETS, LA FORCE DE CORPS, LA VALEUR D'UN GRISÉ... LE TYPOMÈTRE SERT DONC À REPRODUIRE UNE MISE EN PAGES EN MESURANT TOUS SES ÉLÉMENTS. DÈS 1897, L'ALLEMAND A. W. FABER PROPOSE DES RÈGLES COULISSANTES PERMETTANT AUX TYPOGRAPHES DE MESURER ET DE CALCULER PLUS FACILEMENT LEURS MISES EN PAGE. DE NOMBREUX MODÈLES SERONT EN USAGE JUSQU'À L'APPARITION DU NUMÉRIQUE ET DE L'INFORMATIQUE.

**NUMBER**

**OUANE.**

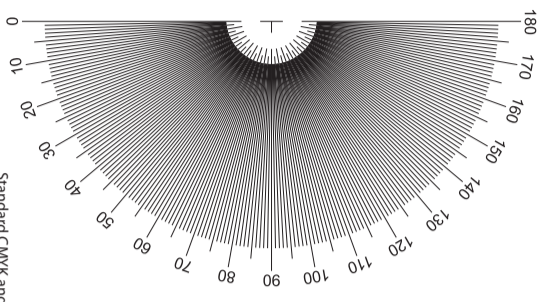
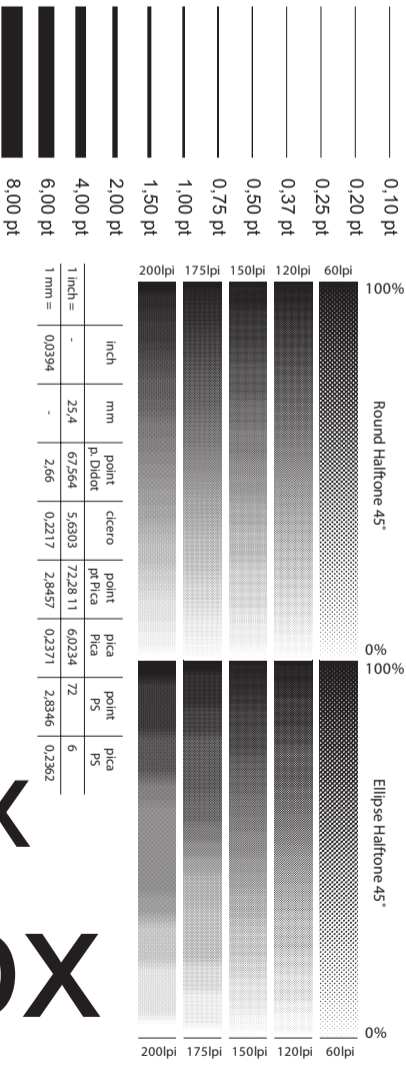
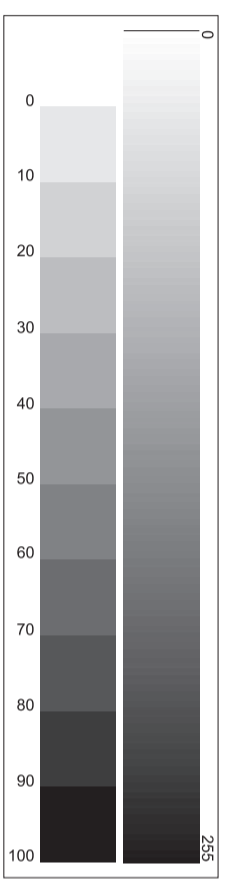
**I**



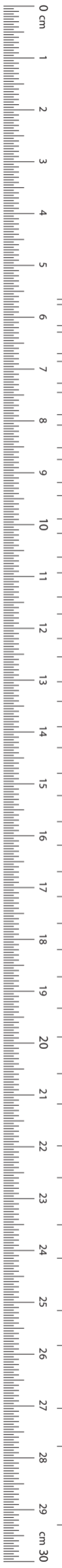
**NUMBER**

**TOU.**

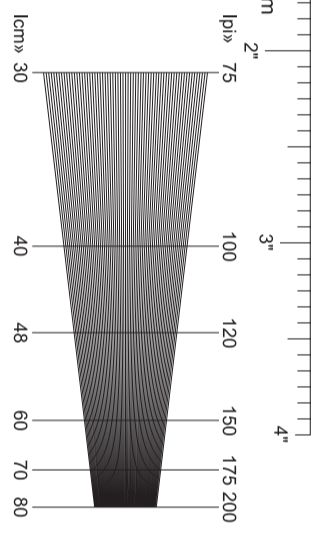
**2**



Standard CMYK angles  
 Cyan 15°  
 Magenta 75°  
 Yellow 0°  
 Black 45°



A	mm x mm	B	mm x mm
4A	1682 x 2378	4B	2000 x 2828
2A	1189 x 1682	2B	1414 x 2000
A0	841 x 1189	B0	1000 x 1414
A1	594 x 841	B1	707 x 1000
A2	420 x 594	B2	500 x 707
A3	297 x 420	B3	353 x 500
A4	210 x 297	B4	250 x 353
A5	148 x 210	B5	176 x 250
A6	105 x 148	B6	125 x 176
A7	74 x 105	B7	88 x 125
A8	52 x 74	B8	62 x 88
A9	37 x 52	B9	44 x 62
A10	26 x 37	B10	31 x 44



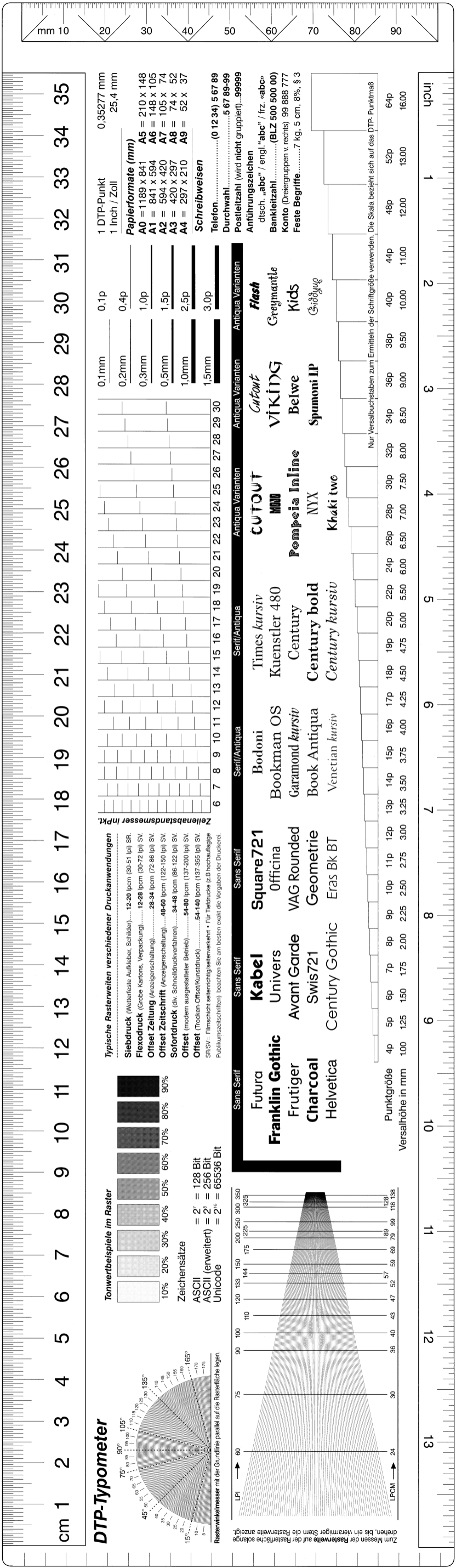
4pt Hkpx  
 5pt Hkpx  
 6pt Hkpx  
 7pt Hkpx  
 8pt Hkpx  
 9pt Hkpx  
 10pt Hkpx  
 11pt Hkpx  
 12pt Hkpx  
 13pt Hkpx  
 14pt Hkpx  
 15pt Hkpx  
 16pt Hkpx  
 17pt Hkpx  
 18pt Hkpx  
 19pt Hkpx  
 20pt Hkpx  
 24pt Hkpx  
 28pt Hkpx  
 32pt Hkpx  
 36pt Hkpx  
 40pt Hkpx  
 48pt Hkpx  
 60pt Hkpx

Arial Regular

**NUMBER**

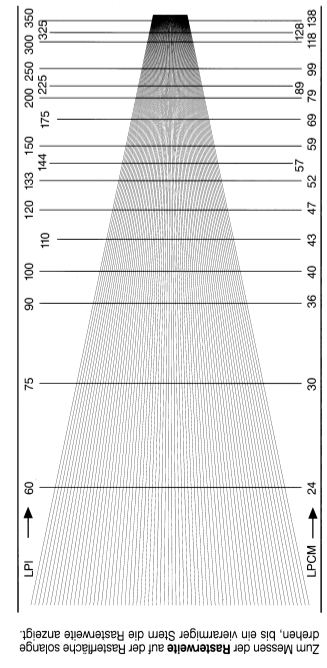
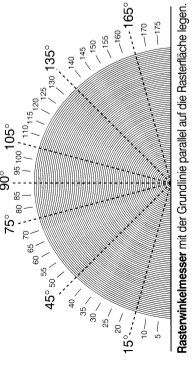
**TRI.**

**3**

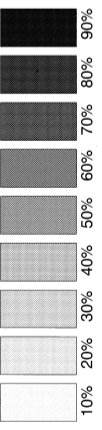


cm 1 2 3 4 5 6 7 8 9 10 11 12 13 14 15 16 17 18 19 20 21 22 23 24 25 26 27 28 29 30 31 32 33 34 35

### DTP-Typometer



### Tonwertbeispiele im Raster



Zeichensätze  
ASCII = 2<sup>7</sup> = 128 Bit  
ASCII (erweitert) = 2<sup>8</sup> = 256 Bit  
Unicode = 2<sup>16</sup> = 65536 Bit

### Typische Rasterweiten verschiedener Druckeranwendungen

- Siebdruck (Weiterste Aufkleber, Schilder)..... 12-20 lpcm (30-51 lpi) SR.
- Flexodruck (Grobe Kartons, Verpackung)..... 12-28 lpcm (30-72 lpi) SV.
- Offset Zeitung (Anzeigenschaltung)..... 28-34 lpcm (72-86 lpi) SV.
- Offset Zeitschrift (Anzeigenschaltung)..... 48-60 lpcm (122-150 lpi) SV.
- Sofordruck (div. Schnelldruckverfahren)..... 34-48 lpcm (86-122 lpi) SV.
- Offset (modern ausgestatteter Betrieb)..... 54-80 lpcm (137-395 lpi) SV.
- Offset (Trocken-Offset/Kunstdruck)..... 54-140 lpcm (137-395 lpi) SV.

SRSV = Filmschicht selbstständig selbstenkehrt • Für Tiefdrucke (z.B. hochauflösende Publikumszeitschriften) beachten Sie am besten exakt die Vorgaben der Druckerei.

### Zeilensatzmesser in Pkt.

6	7	8	9	10	11	12	13	14	15	16	17	18	19	20	21	22	23	24	25	26	27	28	29	30
---	---	---	---	----	----	----	----	----	----	----	----	----	----	----	----	----	----	----	----	----	----	----	----	----

1 DTP-Punkt 0,35277 mm  
1 Inch / Zoll 25,4 mm

### Papierformate (mm)

- A0 = 1189 x 841
- A1 = 841 x 594
- A2 = 594 x 420
- A3 = 420 x 297
- A4 = 297 x 210
- A5 = 210 x 148
- A6 = 148 x 105
- A7 = 105 x 74
- A8 = 74 x 52
- A9 = 52 x 37

### Schreibweisen

- Telefon..... (0 12 34) 5 67 89
- Durchwahl..... 5 67 89-99
- Postleitzahl (wird nicht gruppiert)...99999

Sans Serif	Sans Serif	Sans Serif	Serif/Antiqua	Serif/Antiqua	Antiqua Varianten	Antiqua Varianten	Antiqua Varianten
Futura	Kabel	Bodoni	Times <i>kursiv</i>	<i>Cutout</i>	<i>Flash</i>		
Franklin Gothic	Univers	Bookman OS	Kuenstler 480	MMB	Graymanile		
Frutiger	Avant Garde	Garamond <i>kursiv</i>	Century	Pompeia Inline	Kids		
Charcoal	Swis721	Book Antiqua	Century bold	NYX	Giddegug		
Helvetica	Century Gothic	Venetian <i>kursiv</i>	Century <i>kursiv</i>	Khaki two			

Punktgröße 4p 5p 6p 7p 8p 9p 10p 11p 12p 13p 14p 15p 16p 17p 18p 19p 20p 22p 24p 26p 28p 30p 32p 34p 36p 38p 40p 44p 48p 52p 64p  
Versalhöhe in mm 100 125 150 175 200 225 250 275 300 325 350 375 400 425 450 475 500 550 600 650 700 750 800 850 900 950 1000 1100 1200 1300 1600

inch 1 2 3 4 5 6 7 8 9 10 11 12 13

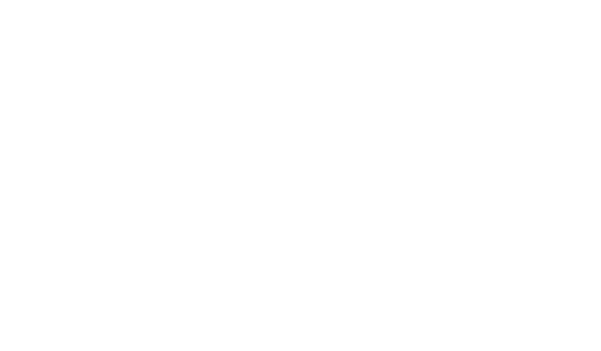
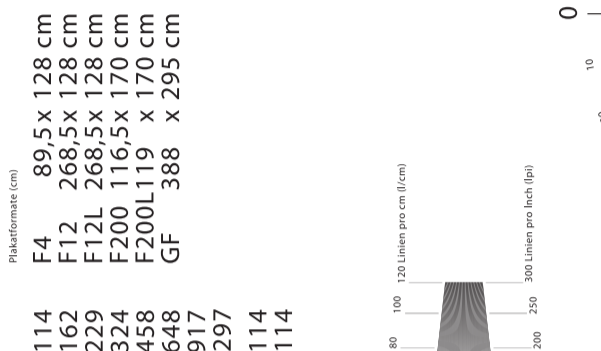
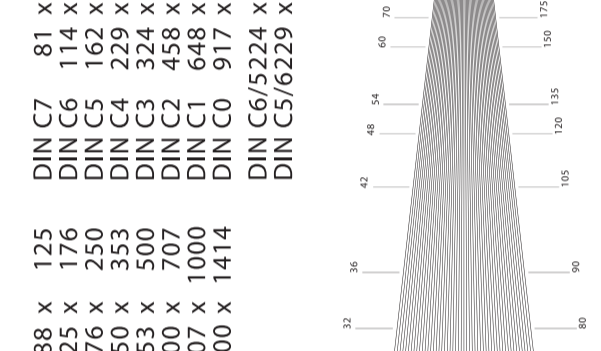
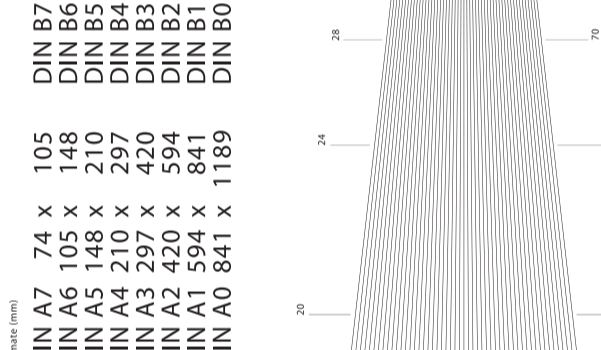
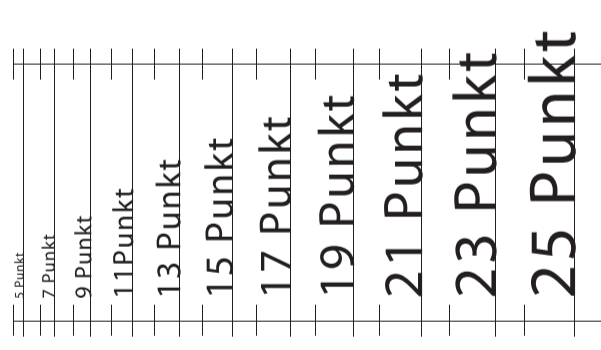
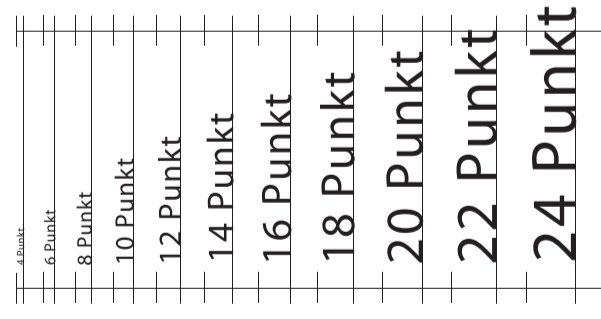
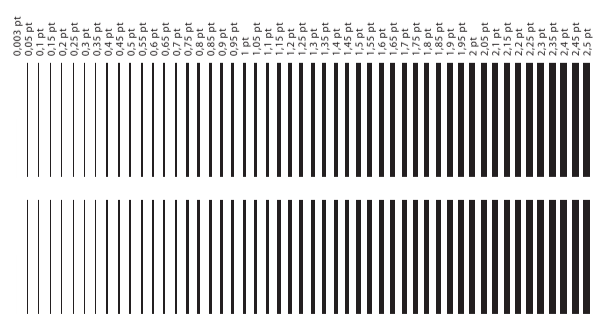
Nur Versalbuchstaben zum Ermitteln der Schriftgröße verwenden. Die Skala bezieht sich auf das DTP-Punktmaß



**NUMBER**

**FAURE.**

**4**



Formate (mm)

DIN A7	74 x 105
DIN A6	105 x 148
DIN A5	148 x 210
DIN A4	210 x 297
DIN A3	297 x 420
DIN A2	420 x 594
DIN A1	594 x 841
DIN A0	841 x 1189

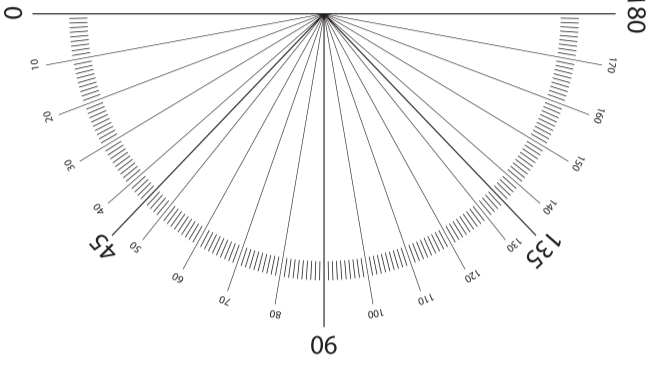
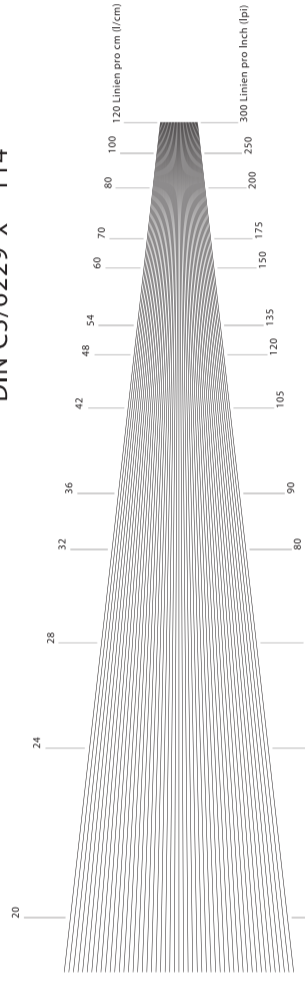
Plakatformate (cm)

F4	89,5 x 128
F12	268,5 x 128
F12L	268,5 x 128
F200	116,5 x 170
F200L119	x 170
GF	388 x 295

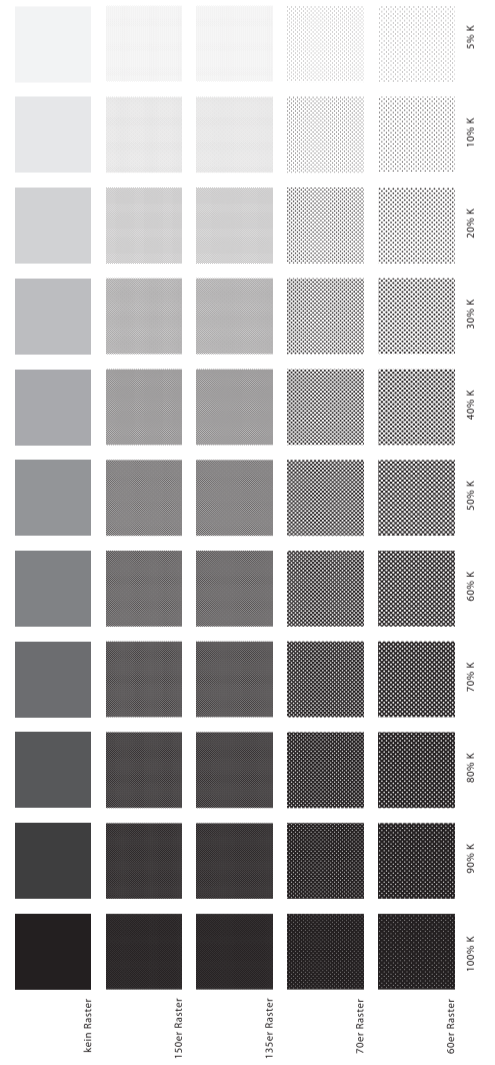
DIN B7 88 x 125  
DIN B6 125 x 176  
DIN B5 176 x 250  
DIN B4 250 x 353  
DIN B3 353 x 500  
DIN B2 500 x 707  
DIN B1 707 x 1000  
DIN B01000 x 1414

DIN C7 81 x 114  
DIN C6 114 x 162  
DIN C5 162 x 229  
DIN C4 229 x 324  
DIN C3 324 x 458  
DIN C2 458 x 648  
DIN C1 648 x 917  
DIN C0 917 x 1297

DIN C6/5224 x 114  
DIN C5/6229 x 114



Postscript-Rasterwinkelung:  
C 15° / 105°  
M 75°  
Y 0° / 90°  
K 45°



**ANDDDD NUMBER**

**FAÏVE.**

**5**

**Line Spacing (pt)**

4	16
5	17
6	18
7	19
8	20
9	21
10	22
11	23
12	24
13	
14	
15	

**Rule Weight**

0.5
1
1.5
2
3
4
5
6
7
8
9
10
11
12
14
16
18
20
24

**Shading**

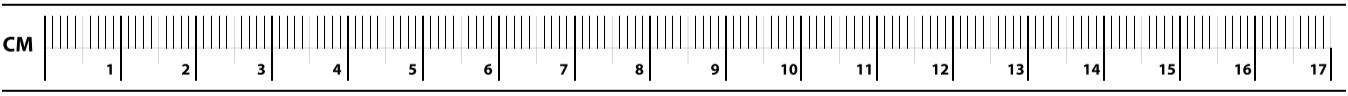
3%
10%
30%
50%
70%
90%
100%

**Tint**

100%
95%
90%
85%
80%
75%
70%
65%
60%
55%
50%
45%
40%
35%
30%
25%
20%
15%
10%
5%

**Font Size (pt)**

5 Exp
6 Exp
7 Exp
8 Exp
9 Exp
10 Exp
11 Exp
12 Exp
13 Exp
14 Exp
15 Exp
16 Exp
18 Exp
20 Exp
24 Exp
30 Exp
36 Exp
48 Exp
54 Ex
60 Ex
72 Ex



**MESUREZ**

**BIEN**

**MERCI BISOU.**

**|** GEOFFREY DORNE - DESIGNER - [HTTP://GRAPHISM.FR](http://GRAPHISM.FR)